



INDOFINE Chemical Company, Inc.

121 Stryker Lane, Bldg. 30, Suite 1 • Hillsborough, NJ 08844 • U.S.A.

Phone: (908) 359-6778 • FAX: (908) 359-1179

website: www.indofinechemical.com

e-mail: chemical@indofinechemical.com

CERTIFICATE OF ANALYSIS

Catalog Number: 22-332

Product Name: **3'-HYDROXY- β -NAPHTHOFLAVONE**

Lot Number: 0102010

Chemical Formula: C₁₉H₁₂O₃

Molecular Weight: 288.31

Melting Point 286-290°C

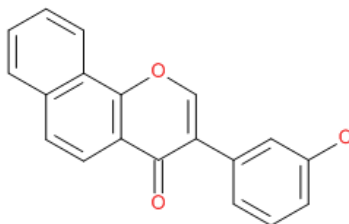
Appearance: Off white powder

Solubility: Soluble in DMSO

TLC: Chloroform : Methanol (9:1)

NMR Spectrum: Enclosed (Confirms to the structure)

Purity (HPLC): 98.91%





INDOFINE Chemical Company, Inc.

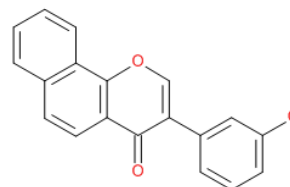
121 Stryker Lane, Bldg. 30, Suite 1 • Hillsborough, NJ 08844 • U.S.A.

Phone: (908) 359-6778 • Fax: (908) 359-1179

Website: www.indofinechemical.com

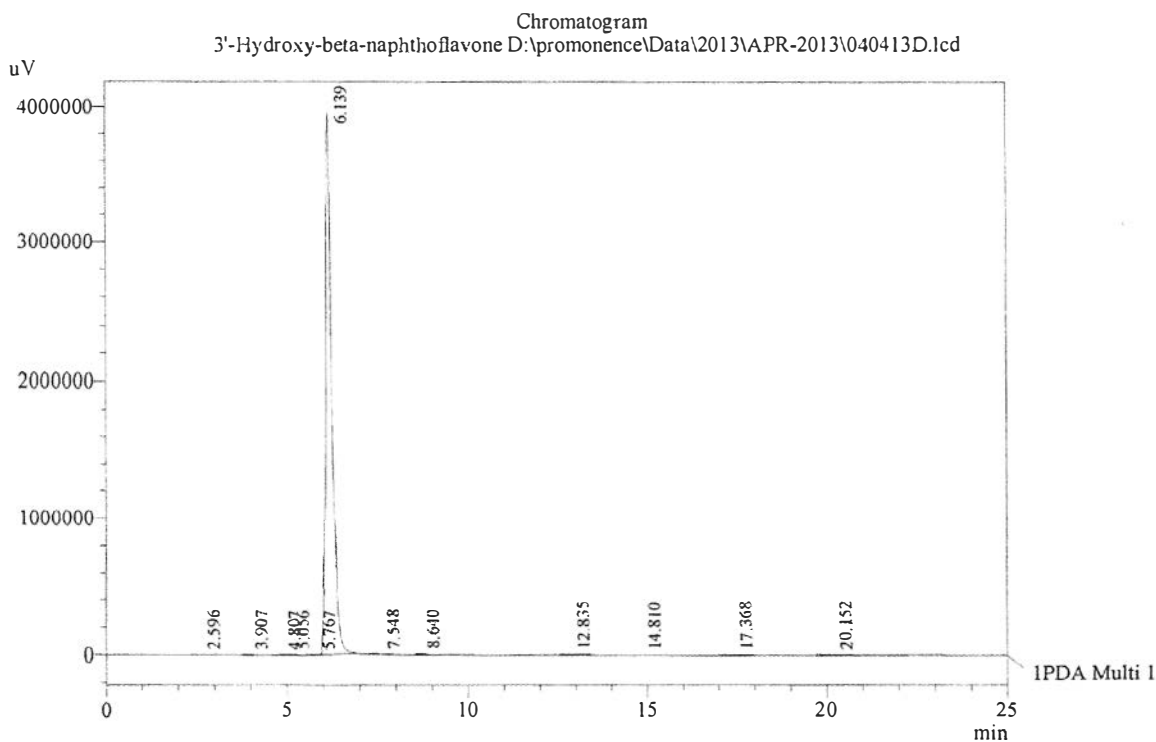
E-mail: chemical@indofinechemical.com

HPLC ANALYSIS



Acquired by : Sanjeev
 Sample Name : 3'-Hydroxy-beta-naphthoflavone
 Sample ID : Lot No:-0102010
 Injection Volume : 20 uL
 Data Filename : 040413D.lcd
 Method Filename : Linear Isocratic.M.lcm
 Column : LUNA C-18(2), (250mm x4.6mm 5.0μ)
 Flow : 1.000 mL/min.
 Mobile Phase : A(30% of Water) B(70% of Acetonitrile)
 Diluent : Acetonitrile:Methanol(1:1)

Catalog No.: 22-332
 Product name: 3'-Hydroxy-β-Naphthoflavone
 Lot No.: 0102010



1 PDA Multi 1 / 230nm 4nm

PeakTable

PDA Ch1 230nm 4nm

Peak#	Name	Ret. Time	Area	Area %	Relative Retention Time
1	RT:2.596	2.596	10504	0.02	0.42
2	RT:3.907	3.907	18758	0.04	0.64
3	RT:4.807	4.807	5640	0.01	0.78
4	RT:5.056	5.056	23498	0.05	0.82
5	RT:5.767	5.767	7114	0.01	0.94
6	3'-OH-beta-naphthoflavone	6.139	46925291	98.91	1.00
7	RT:7.548	7.548	49994	0.11	1.23
8	RT:8.640	8.640	151781	0.32	1.41
9	RT:12.835	12.835	103565	0.22	2.09
10	RT:14.810	14.810	6324	0.01	2.41
11	RT:17.368	17.368	32637	0.07	2.83
12	RT:20.152	20.152	107198	0.23	3.28
Total			47442305	100.00	



INDOFINE Chemical Company, Inc.

121 Stryker Lane, Bldg. 30, Suite 1
Hillsborough, NJ 08844

Catalog No.: 22-332
Product name: 3'-Hydroxy- β -Naphthoflavone
Lot No.: 0102010

SOLVENT DMSO
NS 16
DS 0
SWH 9803.922 Hz
FIDRES 0.326819 Hz
AQ 1.5299480 sec
RG 22.6
DW 51.000 usec
DE 6.00 usec
TE 298.2 K
D1 1.5000000 sec
TDO 1

ICC-APR-14
1H IN DMSO
AVANCE-600

===== CHANNEL f1 =====
NUC1 1H
P1 7.50 usec
PL1 2.60 dB
PL1W 6.62584448 W
SFO1 600.3345228 MHz
SI 32768
SF 600.3300114 MHz
WDW EM
SSB 0
LB 0.30 Hz
GB 0
PC 1.00

